




Ficha técnica vestuario/Garment technical data sheet - 04511B & 04511D

| Identificación artículo/Item identification | | | | | |
|---|--|---|---|--|---------------|
| Ref. Industrial Starter/ IS commercial item code: | 04511B (box) 04511D (display) | Ref. proveedor/ Supplier item code*: | 04511B | Código proveedor/ Supplier code: | 011465 |
| Ref. color Industrial Starter/ Industrial Starter colour code: | 080 (gris/grey) | <input checked="" type="checkbox"/> | Artículo del catalogo/Item from catalogue | | |
| | | <input type="checkbox"/> | Artículo personalizado/Customized item | | |
| Nombre producto/Item name: | Softshell "SALSONG" / "SALSONG" Softshell | | | | |
| | | Ref. cliente /Customer code: | | N/A | |

| Descripción técnica/Technical item description | | | |
|--|--|---|---|
| | Composición/ Fabric composition | Color/colour (Pantone) | Gramaje/ Fabric weight [g/m ²] |
| Tejido principal/ Shell main fabric: | 100% poliéster interlock y membrana TPU (W/P 8.000 mm, MVP 3.000 mm)/ 100% polyester interlock bonded with 100% polyester interlock ,with TPU membrane (W/P 8.000 mm, MVP 3.000 mm). | Gris antracita/ Anthrax Grey | 185 +/- 5% |
| Tejido contraste/ Contrast fabric: | 100% poliéster interlock y membrana TPU (W/P 8.000 mm, MVP 3.000 mm) / 100% polyester interlock bonded with 100% polyester interlock, with TPU membrane (W/P 8.000 mm, MVP 3.000 mm). | Negro / Black | 185 +/- 5% |
| Accesorios/Accessories: | n. 3 bolsillos (n. 1 bolsillo en el pecho con cremallera sellada), n. 2 bolsillos interiores, cremallera frontal, capucha fija, inserciones reflectantes/ n. 3 pockets (n. 1 chest pocket with taped zipper) , n. 2 inner pockets, taped central zipper, fixed hood, Hi Vi inserts | | |
| Logos/ Logos & embroideries: |   | | |
| Tallas/Sizes: | S, M, L, XL, XXL, 3XL | | |
| Embalaje/Packages: | 1) 04511B: 1 pz. embalada en caja de cartón, 10 pz por embalaje / 04511B: n. 1 packed in paper box, n. 10 paper boxes per export carton. 2) 04511D: n. 12 caja surtida (2-S, 4-M, 3-L, 2-XL, 1-XXL) / 04511D: n. 12 assorted boxes (2-S, 4-M, 3-L, 2-XL, 1-XXL). | | |
| Instrucciones de lavado/Care label: |  | | |

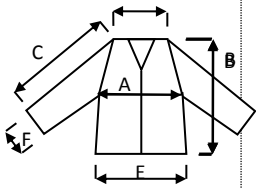
Ficha técnica vestuario/Garment technical data sheet - 04511B & 04511D

| Conformidad CE/Conformity with EC standards | | | |
|--|--|--|-------------------|
| Cat. EPI/ PPE Category: | I | Normas y niveles de protección/ EC standards and protection levels: | EN ISO 13688:2013 |
| Certificado UE nº /EU type-examination certificate No.: | - | Fecha/Date : | - |
| Ente notificado/notify body: | - | Nº/ No.: | - |
| Idiomas de folleto instrucciones/ Manufacturer's notes languages: | IT,EN,ES,CZ,PL,FR, PT,SK,HU,RS,HR,LT,LV,SI,DE,GR,RO,EE | | |

| Medidas de las tallas/Size measurements [cm] | | | | | | |
|--|-----|-----|-----|-----|-----|-----|
| Tallas/Size: | S | M | L | XL | XXL | 3XL |
| A. Pecho / Chest: | 110 | 116 | 122 | 128 | 136 | 146 |
| B. Longitud total / Tot. length: | 70 | 72 | 74 | 76 | 78 | 80 |
| C. Mangas / Sleeves: | 79 | 81 | 83 | 85 | 87 | 89 |
| E. Fondo / Bottom: | 102 | 108 | 114 | 120 | 128 | 138 |
| F. Puño / Sleeve opening: | 11 | 11 | 11 | 12 | 12 | 13 |

Ficha técnica vestuario/Garment technical data sheet - 04511B & 04511D

Diseño y foto/Drawing and photo



**04511D SOFTSHELL SALSONG al " CUBO" n. 12 caja surtida (2-S, 4-M, 3-L, 2-XL, 1-XXL)/
04511D "CUBE" SALSONG SOFTSHELL n. 12 assorted boxes (2-S, 4-M, 3-L, 2-XL, 1-XXL).**



(2-S, 4-M, 3-L, 2-XL, 1-XXL)

Puzol (Valencia) , 15/06/2018



Resp. Compras/Purchasing manager